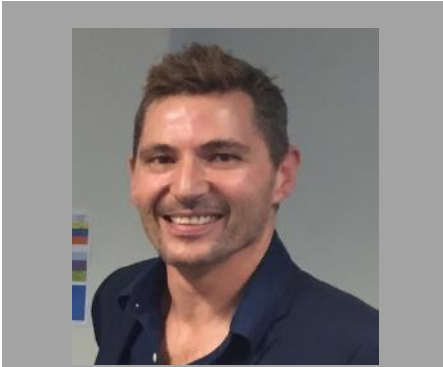




GUEST SPEAKER

Tamworth FLPN

25th and 26th May 2017



Nathan is a foster parent and father of three with a professional background in child counselling, teaching and social service management. Following time as a lecturer at the University of Canterbury, New Zealand, in 2010 he founded a private training consultancy with the goal of facilitating easy to understand professional development training reflecting the latest neuroscience discoveries and their practical implications for everyday practice. Since then he has been in demand, delivering in excess of 150 presentations every year throughout Australia, New Zealand and the UK including Family Relationship Services Australia (FRSA) conferences and Child Inclusive Practice forums.

This is an invaluable workshop for professionals working with children and families looking to reinvigorate their practice.

Tamworth Family Law Pathways Network invites members to attend a guest speaker event

The Developing Brain

with

Nathan Wallis

Educational Psychologist

Thursday 25th and Friday 26th May 2017

9.00 am – 4.30pm (3.00pm Friday)

Lunch and morning tea provided

CONTENT: This workshop will briefly touch on the workshop Nathan presented in 2016 and will then build on the developing brain topic before moving onto the healing brain.

VENUE: Centacare NENW, V Guy Building, 201 Marius Street, Tamworth

Cost: \$82.50 (incl GST)

To RSVP and for further information contact FLPN Project Officer Joanna Birtles at j.birtles@centacarenenw.com.au

**Numbers capped at 75 attendees—please complete registration form on next page*



Australian Government



Family Law
PATHWAYS
NETWORK

TAMWORTH

